

Airport Lounge Membership

Save on airport lounge memberships by salary packaging the cost with Easi.

The next time you travel, you can relax in the airport lounge, knowing you've saved on your membership fee.

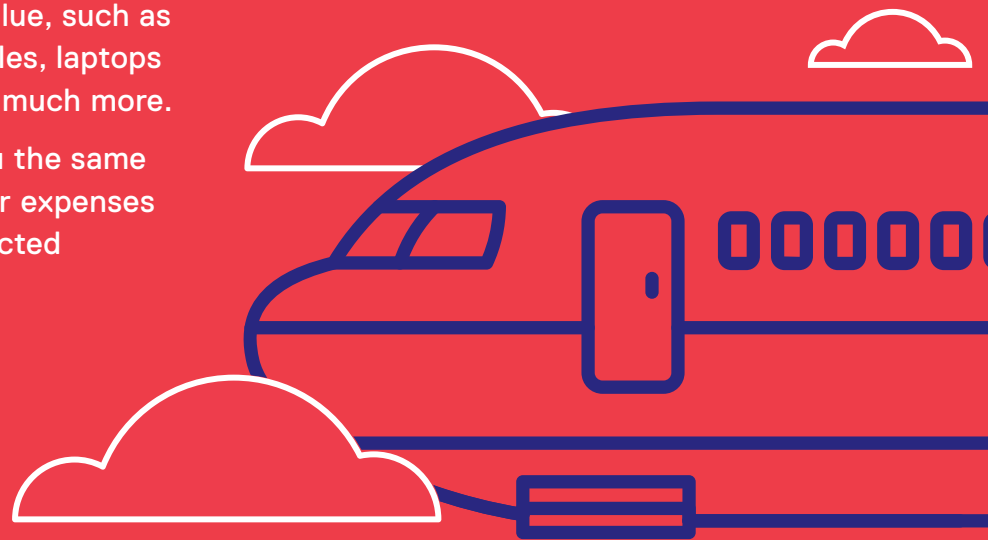
Salary packaging is an Australian Tax Office (ATO) approved way of restructuring your income so you pay less tax.

It's an arrangement with your employer whereby you forego part of your gross salary in return for benefits of a similar value, such as mortgage repayments, motor vehicles, laptops and PDAs, meal entertainment and much more.

Essentially, your employer pays you the same salary, but instead of paying all your expenses after you're taxed, you pay for selected

expenses before you're taxed, thereby reducing your taxable income. Rather than waiting until your annual tax return, salary package tax-deductible items throughout the year and enjoy the savings each pay day.

Salary packaging with Easi can save you thousands of dollars every year.



Benefits

- Save the GST
- Access your employer's discount and save more
- Pay for your Airport lounge membership pre-tax

What can I package?

- Airline lounge membership joining fee
- Airline lounge membership annual renewal fee

How much can I save?

At Easi, we do the work for you. Use our salary packaging calculator to estimate how much you could save.

Airport Lounge Membership

Case study

John's airport lounge membership is \$880 per year. By using the employer's scheme, John is able to purchase the airport lounge membership for \$660. By salary packaging the membership, John will save the GST of \$60 and (assuming his tax rate is 33.3%), John will save a further \$220 on tax.

John's total savings will equate to

Membership cost	\$880
Discount price	\$660
GST	\$60
Tax	\$220

Total **\$220**

How can I maximise my pay?

Step 1

Check if your employer has an airport lounge discount programme with your choice of carrier.



Step 2

If yes, use your employer's scheme number when purchasing your airport lounge membership to access your employer's bulk discounts on the membership for further savings.



Step 3

Purchase your membership directly from the airport lounge carrier and retain the invoice.

Step 4

Easi will process this deduction through your next salary payroll run and reimburse it to your nominated account.



Step 5

Scan the Easi Airport lounge membership form and the invoice and send to Easi.



Step 6

Complete the Easi Airport lounge membership online form, print and sign.

What do I need to know?

- Airport lounge membership fees are tax free when provided to you as part of a salary packaging arrangement and would not usually be tax deductible to you
- When salary packaging, you save the GST in addition to the tax savings on the cost of the membership
- There is no limit to the number of airport lounge memberships that can be salary packaged
- There is no business use requirement – you can use the lounge for personal use
- You can only salary package airport lounge membership for yourself (not for family members)